



ELECTRIC PROPULSION

QUIET | POWERFUL | RELIABLE | GREEN | EFFICIENT

BENEFITS OF GOING GREEN

The Elco motor will never pollute our environment

Less dependence on foreign oil

No oil in the bilge which could be pumped overboard accidentally

No exhaust fumes being emitted into the environment

No noise pollution

Batteries can be recycled at the end of their life

No used oil to dispose of

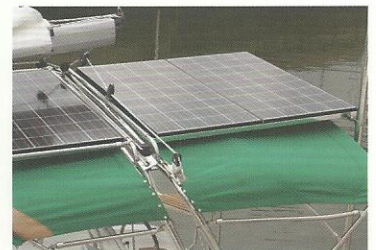
Pride of ownership because you are "green"

Zero carbon footprint if you charge with wind or solar

Never needs a tune-up and no need to winterize

Elco Motor Yachts has been leading the way in clean, efficient electric propulsion since 1893.

We design and build eco-friendly products that reduce dependency on fossil fuels and eliminate the noise, emissions, maintenance and risk of traditional engines. Elco is the choice of smart, discerning boat owners around the world.



elcomotoryachts.com

Stay connected



Standard Elco Electric System Components



■ Elco has developed a new, more efficient series of marine propulsion systems based upon the use of super reliable AC induction motors. The systems are all plug and play making installation straightforward for retrofitting existing boats as well as in new boat construction. They are suitable for powering sailboats, launches, trawlers, and catamarans from 15' through 75' with a power range from 6 HP to 100 HP.

Pictured above

1

2
3
4
5
6

Standard Equipment with every Elco Electric Propulsion System

- 1 Motor enclosure, Inverter/Controller
- 2 Throttle
- 3 E-Gauge IV
- 4 Ignition key
- 5 Power on light
- 6 Power boost button and 15' Pre-wired harness



Available option from Elco
E-Gauge VII: upgrade to a feature rich full color display